

- [HOME](#)
- [ADVERTISING](#)
- [LEGALS](#)
- [MARKETPLACE](#)
- [PRESS PASS](#)
- [JOB BOARD](#)
- [ALUMNI](#)
- [REPRINTS](#)
- [SUBSCRIPTIONS](#)
- [DONATE](#)

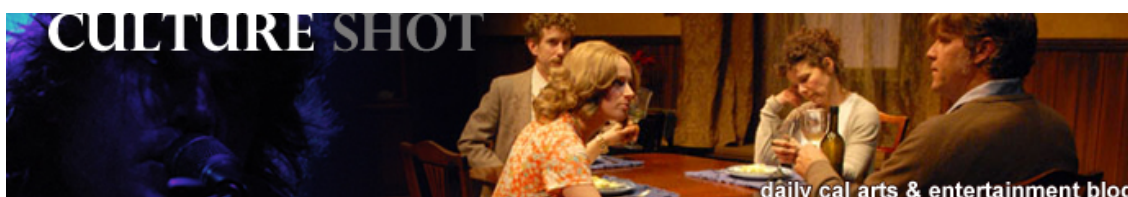


Thursday, October 7, 2010 | 3:29 am

ADD WWW.DAILYCAL.ORG TO BOOKMARKS
 SIGN UP FOR: [MOBILE](#) | [RSS FEED](#)

General **Search**
[Advanced Search](#)

- [ABOUT](#)
- [NEWS](#)
- [SPORTS](#)
- [ARTS & ENTERTAINMENT](#)
- [OPINION](#)
- [BLOGS](#)
- [MULTIMEDIA](#)



[RSS](#) [ATOM](#)

Who We Are

Keeping you up to date on the latest in arts & entertainment in the Bay Area and beyond.

Recent Comments

ADRIAN
 this sounds awesome. post more blogposts with links in them! then I can listen to music while I read and get a more "hands-on" experience 😊 ...

MARSHALL
 re: "Sorry Lady Gaga, but you're meat dress doesn't cut it." Huh? Try: "Sorry Lady Gaga, but your meat dress doesn't cut it."...

DOMINIQUE
 very well done! I wish I could've been there!!...

Categories

- [Art](#)
- [Books](#)
- [Dance](#)
- [Events](#)
- [Film](#)
- [Interview](#)
- [literature](#)
- [Miscellaneous](#)
- [Music](#)
- [Retrospective](#)
- [Television](#)
- [Theater](#)
- [Uncategorized](#)

New Solo Art Show: "ri-FLEKT" at WE Artspace

By Nastia Voynovskaya *October 6, 2010 | 5:19 am*
 Posted in: [Art](#), [Events](#)

Ever walk around and notice odd, discarded objects on the side of the road? So does San Francisco artist Chris Sollars, and he's arranged some of them into found-object sculptures that have inspired a new series of drawings, photography, videos and installations. His new solo show at [WE Artspace](#), titled "ri-FLEKT," adventurously explores (and alters) the ways the small Oakland venue interacts with the surrounding urban landscape.



Breaking down the barriers between interior and exterior spaces, Sollars' outdoor works take the spirit of WE Artspace out to the surrounding blocks as much as they reflect the outside environment within the enclosure of the space. The artist swapped the bus stop bench outside the venue with the couch that usually occupies the inside, augmenting each object to bring out the elements of each respective environment. A blanket with the portrait of Charlie, the WE Artspace dog, lays on the outdoor couch while Charlie herself can be found inside, a few feet away. Meanwhile, the bus stop bench occupies the bulk of the interior's floor, a sheet of shiny plastic reflecting the walls while a recording of traffic sounds plays on a stack of speakers.

Uncategorized

Archives

October 2010
 September 2010
 August 2010
 June 2010
 May 2010
 April 2010
 March 2010
 February 2010
 January 2010
 December 2009
 November 2009
 October 2009

Blogroll

Boing Boing
 Daily Cal Arts Twitter
 Fuck Yeah Berkeley Street Art
 HTMLGIANT
 Pitchfork
 The Daily Clog

Ads by Google

[Photography Schools](#)

Free info on local Photography Degree Programs near you!
PhotographySchools.com

[ArtScene](#)

Complete guide to current fine art in Southern California; since 1982.
www.artscenecal.com

[Sell Your Art. Free Trial](#)

Display & sell your art online. Free Trial! Sell your artwork now.
www.Yessy.com

[Are You a Contributor?](#)

Earn 40% Higher Royalty With Veer®
 Become a Veer® Contributor Today!
Contributor.Veer.com

[Cuban Masters Art Exhibit](#)

Daytona MOAS:
 12/07/07 to 4/27/08
 Plan Your Visit:
 Official Area Site
DaytonaBeach.com



Chris Sollars with a photocopied flyer of "Blind Seal Front."

Playing with other methods of inversion, Sollars turns the urban landscape surrounding WE into the subject matter of his two-dimensional works, which he then inserts into the outdoor landscape in return. His photography and minimalistic graphite drawings, displayed in the space's interior, document his found-object sculptures that can be found on the street in the surrounding blocks. Meanwhile, his documentation of objects from space's interior make their way into the outside as facetious photocopied flyers stapled to the surrounding poles.

"ri-FLEKT" will be at WE Artspace (768 40th St, by MacArthur BART) until November 20. The venue is open to the public on Fridays and Saturdays from 12-3 pm, so go check out how Sollars takes his art into the street and the street into his art for this innovative, sometimes humorous exhibit.

Images: Nastia Voynovskaya, *Video:* Chris Sollars

Tags: Chris Sollars, Oakland, WE Artspace



JOIN MEG IN
BUILDING
A NEW
CALIFORNIA

Paid for by Meg Whitman
for Governor 2010

[Email](#)

[Print](#)

[Comments](#)

No Comments »

No comments yet.

[RSS feed for comments on this post.](#) [TrackBack URL](#)

Leave a comment

Name (required)

Mail (will not be published) (required)

Website

[Daily Oakland Deals](#)

Save 50%-90% on the Best of Oakland
1 Awesome Deal Each Day

[Need Information Fast?](#)

Visit The Bing™ Official Site To Make
Key Decisions Quick & Easy.

Advertisements

- [Credit Card Applications](#)
- [Cazare Mamaia](#)
- [Sugar Daddies](#)